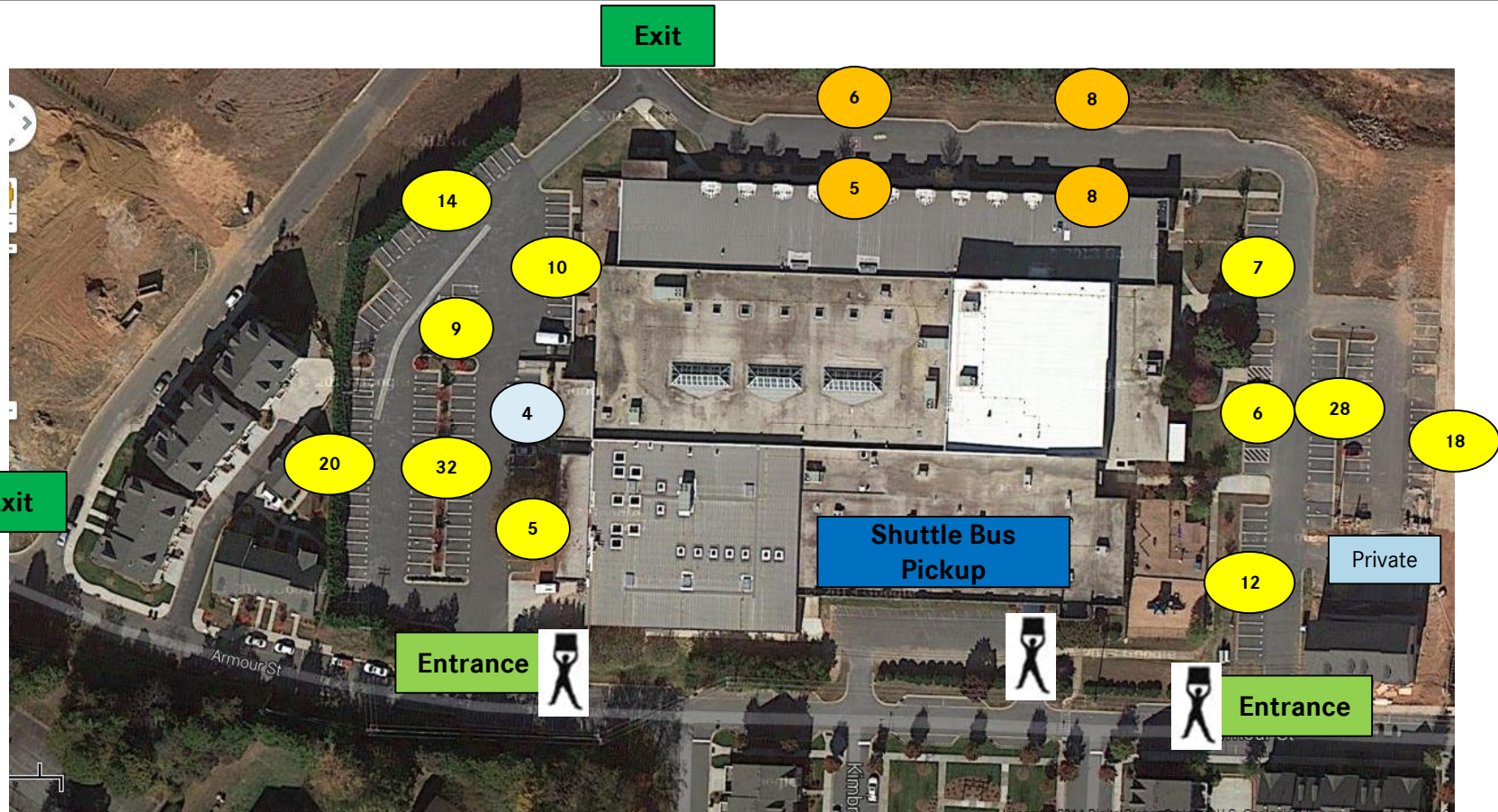
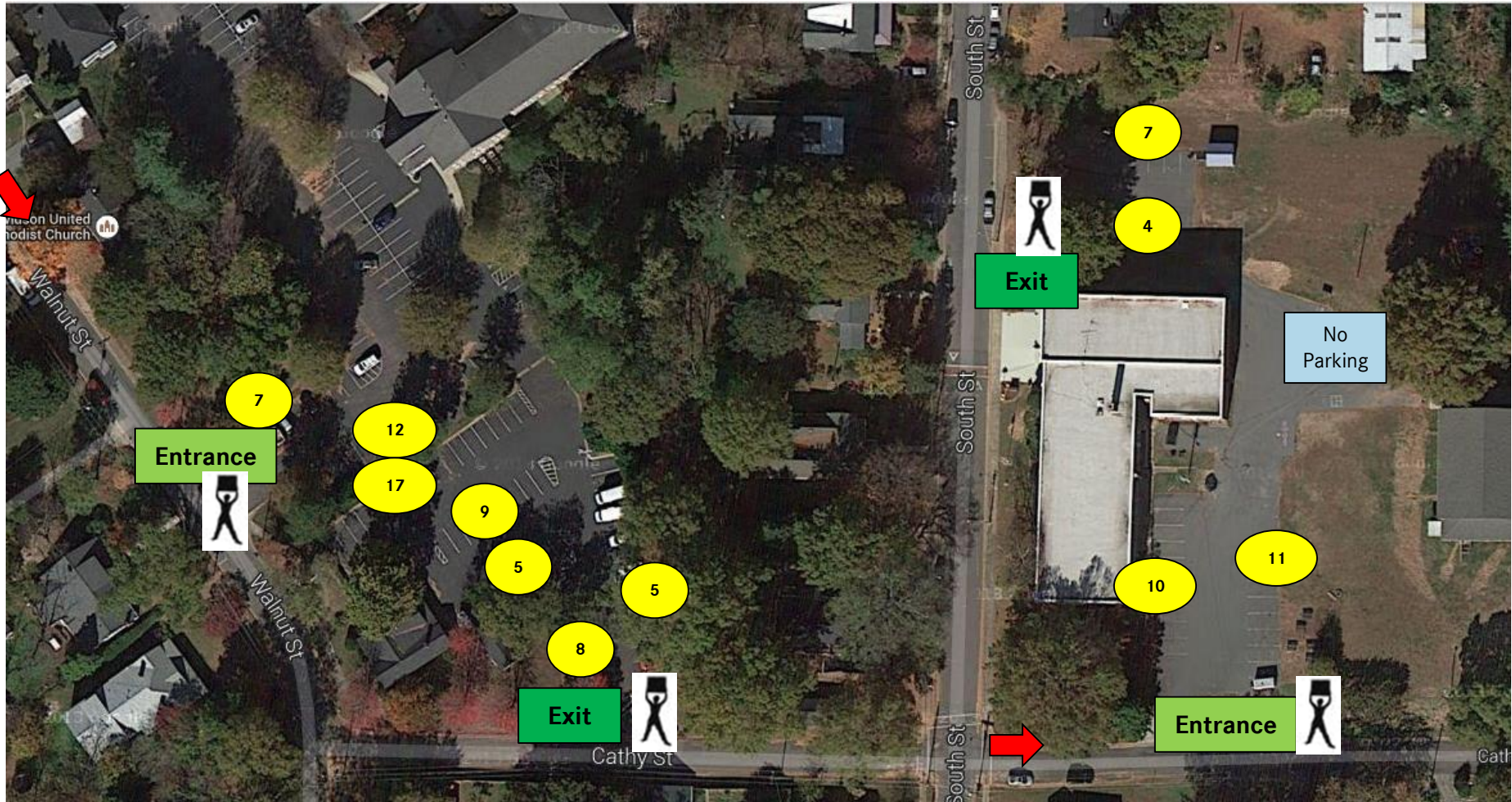


Run for Green FAQs

- What time do parking volunteers need to be on site? – 5:45 AM
- What time does the parking shift end? – 7:30 AM
- The half marathon starts at 7:30 AM. The 5K and 10K runs start at 7:40 AM.
- Do we need to review our plans with the Davidson Police Dept.? – Yes. Roy will do so on Sept. 3.
- Can we set up the signs the night before? – Yes
- When does South Street close to traffic? – 7:00 AM at Main St and at Antiquity. Access during this time will be via Woodland/Cathey Sts from S. Main and via Woodland St from Concord Road.
- How will this impact access to our volunteer and car pool lot? – Those arriving 7:00 - 7:45 AM will have to use those alternate routes. South St will reopen about 7:45 AM when runners have cleared.
- The bus will run from 5:45 AM until 8:00 AM. **Confirm if Parks and Rec bus will run later.**
- The pickup point at CSD is the Armour St front of the building. Drop off is at the curb on Concord Rd just east of Main St. (We will have parking prohibited there so that you and our vendors can unload. This may be a bit congested for the first hour or so, after which the vendors should all have moved on.) I suggest you turn around in the small parking lot of the Dana Science Bldg which is the first building past the DCPC playground.



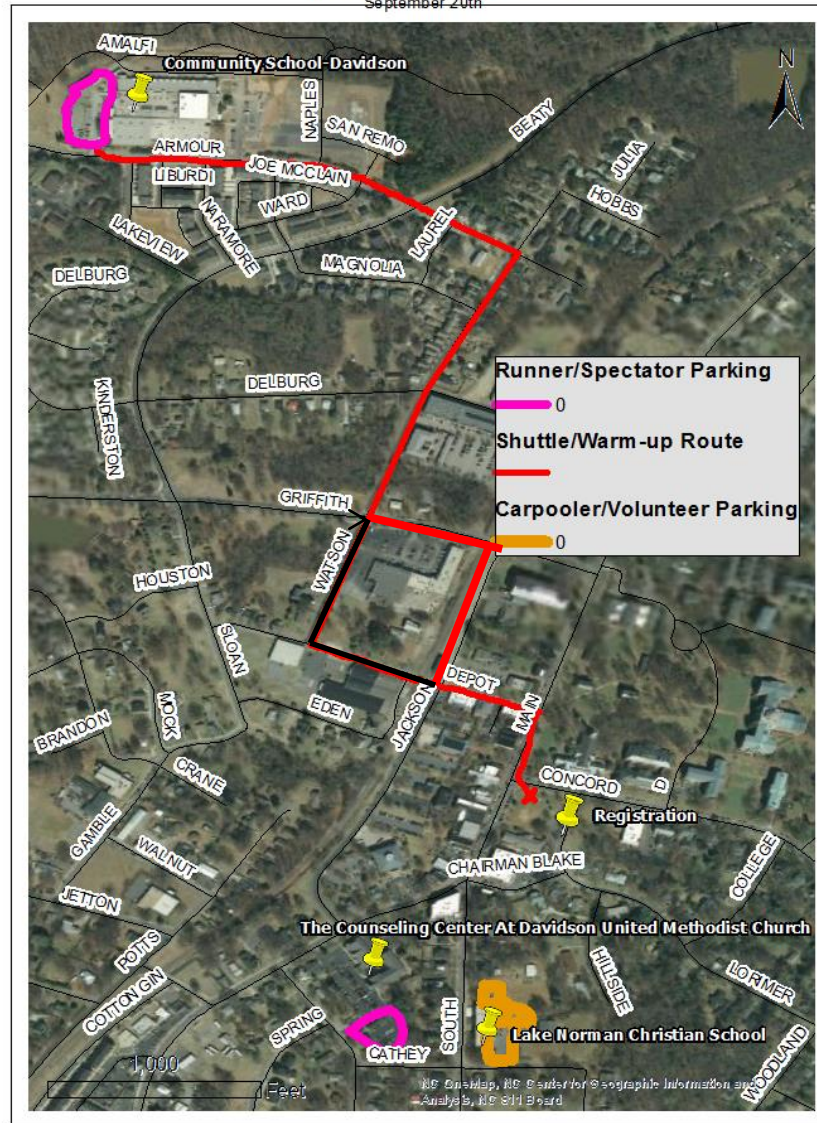
of parking spaces = 94 on West side, 71 on East side and 27 parallel spaces on the North side





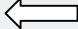

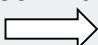
Lake Norman Christian School: # of parking spaces = 32
 DUMC: # of parking spaces = South lot ~ 63

Run For Green 2014

September 20th



- 1 carpooler/volunteer parking lot at Lake Norman Christian School, 251 South St;
 - 2 other runners and spectators parking at Davidson United Meth. Church, 233S Main St;
 - 3 other runners and spectators, Community School of Davidson (Upper School), 404 Armour St. Shuttle bus available.
- Or, run the seven blocks to the Village Green as a warm-up for the race.

Type	Content	Locations	Quantity
Directional	RfG parking with arrow 	First traffic circle	1 (new)
Directional	RfG parking with arrow 	Second traffic circle	1 (new)
Directional	RfG parking with arrow “Community Senior School 404 Armour St.” 	NE corner Beatty & Griffith	1 (on-hand)
Directional	RfG parking with arrow “Community Senior School 404 Armour St.” 	SW corner Beatty & Armour	1 (on-hand)
Directional	RfG parking with arrow “Community Senior School 404 Armour St.” 	SW corner Main & Armour	1 (on-hand)
Entrance	“Entrance”	Per map of Community School	2 (cancel)
Exit	“Exit”	Per map of Community School	2 (cancel)
Entrance	“Entrance: Carpool & Volunteers Only”	Per map of LKN Christian School	1 (on-hand)
Exit	“Exit: Carpool & Volunteers Only”	Per map of LKN Christian School	1 (on-hand)
Entrance	“Entrance” RfG Parking w/arrow	Per map of DUMC	1 (on-hand)
Exit	“Exit”	Per map of DUMC	1 (cancel)
Directional	RfG parking with arrow “Car Pool & Volunteers Only”	NE corner South & Cathey	1 (on-hand)
Directional	RfG parking with arrow “DUMC”	NE corner Main & Walnut	1 (on-hand)
Directional	RfG parking with arrow “DUMC”	NW corner Main & Cathey	1 (on-hand)
Directional	RfG parking with arrow “DUMC”	NE corner Walnut & Cathey	1 (on-hand)

Type	Content	Locations	Quantity
Directional	RfG with arrow	SW corner Watson & Armour	1 (on-hand)
Directional	RfG with arrow	SW corner Watson & Magnolia	1 (on-hand)
Directional	RfG with arrow	SW corner Watson & Delburg	1 (new)
Directional	RfG with arrow	SW corner Watson & Griffith	1 (new)
Directional	RfG with arrow	SW corner Watson & Depot	1 (new)
Directional	RfG with arrow	SW corner Jackson & Depot	1 (new)
Directional	RfG with arrow	SW corner Main & Depot	1 (new)
Directional	RfG with arrow	NW corner South & Cathey	1 (new)
Directional	RfG with arrow	NW corner South & Main	1 (new)

Okay, Shane, we'll adjust the route as you suggest and will post end time as 8:00 (for now). (I am hoping to arrange the park and rec bus as second shuttle and may have them begin at 8:00.)

Justin L. -- would you note this change when the parking map gets revised?

D. Roy Alexander, Executive Director

Davidson Lands Conservancy

P O Box 1952, 120 S. Main Street

Davidson, NC 28036

dlc@davidsonlands.org

704-892-1910

www.davidsonlands.org

One of 25 North Carolina land trusts, "Saving the places you love."

----- Original Message -----

Subject: Re: Run for Green

From: Shane Capps <scapps@csdspartans.org>

Date: Thu, August 28, 2014 9:35 pm

To: Connie Wessner <cwessner@csdspartans.org>

Cc: "dlc@davidsonlands.org" <dlc@davidsonlands.org>, John Burke
<john.c.burke@daimler.com>

John and Roy,

It will be easier to make the right turn onto Main from Griffith. The turn off of Depot is very tight and if there is any traffic it makes it hard (for a new bus driver like me). I suppose the drop-off spot will have a sign? By the map, it seems to be in front of the town green. I am able to drive until 8am; I may be able to stay later but, it's best to post the guaranteed time on your website. Thanks. Shane